

giovanni barbieri

HONORING AND PRESERVE  
THE HISTORICAL ESSENCE  
OF NATURAL STONE  
ITALIAN MOSAICS.

2024 - 25

## THE TIMEWORN MARBLE MOSAIC.



"For myself, the Timeworn mosaic in my home  
is more than just a decor piece –  
it embodies the essence of existence.  
Living with this 100% natural stone, marble creation,  
I am reminded daily of the untouched beauty of our nature.  
Each hand-cut piece, deliberately unique,  
highlights the sacredness of imperfection.  
The manual installation on mesh, with minimal joints,  
brings a sense of primordial authenticity  
that stands out in today's world of artificiality".

Introducing a groundbreaking surface finishing pattern  
that redefines elegance and sustainability in natural stone tiles.

Developed as an evolution of Giovanni Barbieri's  
pioneering invention from 1999,  
this innovative technology achieves a distinctive aesthetic  
by delicately wearing out tile borders,  
resulting in a semi-opaque, natural wavy surface.

Not only does this process enhance the beauty of marble,  
but it also honors its historical essence.  
By selectively "consuming" the softer elements  
of the marble composition,  
it facilitates subsequent polishing to perfectly match  
the quality of original historical floors.

What truly sets this technique apart is its unwavering commitment to sustainability,  
with the entire procedure being executed  
using only ecological abrasives.

For unparalleled care, maintenance, and exceptional aesthetics  
in the antiques natural stone tile market,  
this surface emerges as a standout choice,  
offering both ease of use and a visually captivating finish.

To ensure optimal performance in various settings,  
it is recommended to apply oil water repellent protection,  
enhancing durability and longevity,  
thus preserving the surface's pristine look over time.

Even in the face of deep scratches, restoration remains  
achievable through specialized electrical tools  
commonly employed by marble workers.  
This meticulous process includes hand-finishing  
with suitable glass paper, seamlessly blending with the existing texture  
and aesthetic features of the surface.

With intricate waves seamlessly merging with current grooves,  
these enhancements offer a cohesive and harmonious appearance,  
delivering a perfect balance of functionality and beauty.

Explore the fusion of artistry and sustainability  
with this exceptional natural stone surface.



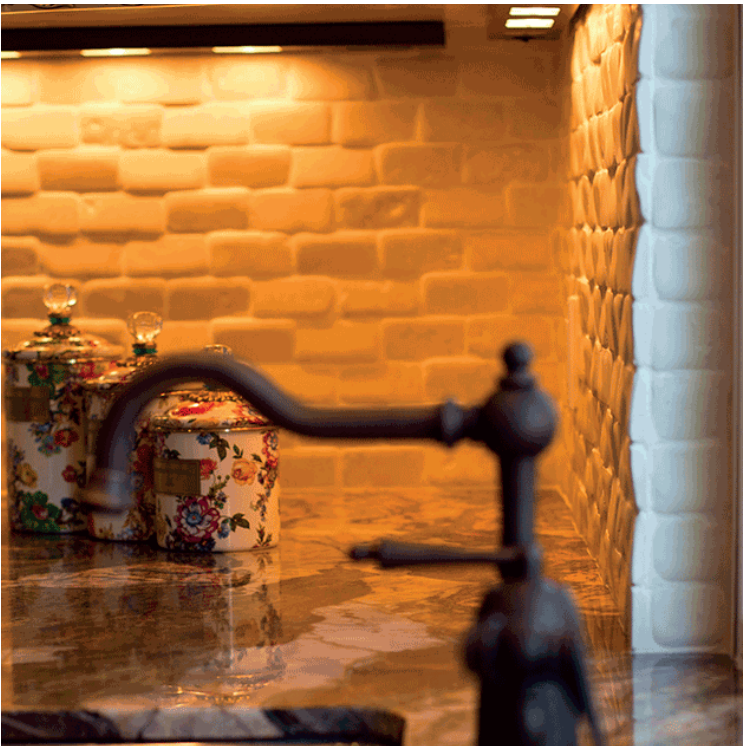


**BIANCO ANTICO ITALIAN MARBLE**  
 2" X 4" STAGGERED MESH MOUNTED  
 2" X 2" SQUARED MESH MOUNTED  
 THICKNESS 3/8 ON 1,0 SQ. FT. NET



BIANCO ANTICO 2" X 2" / 5 X 5 CM

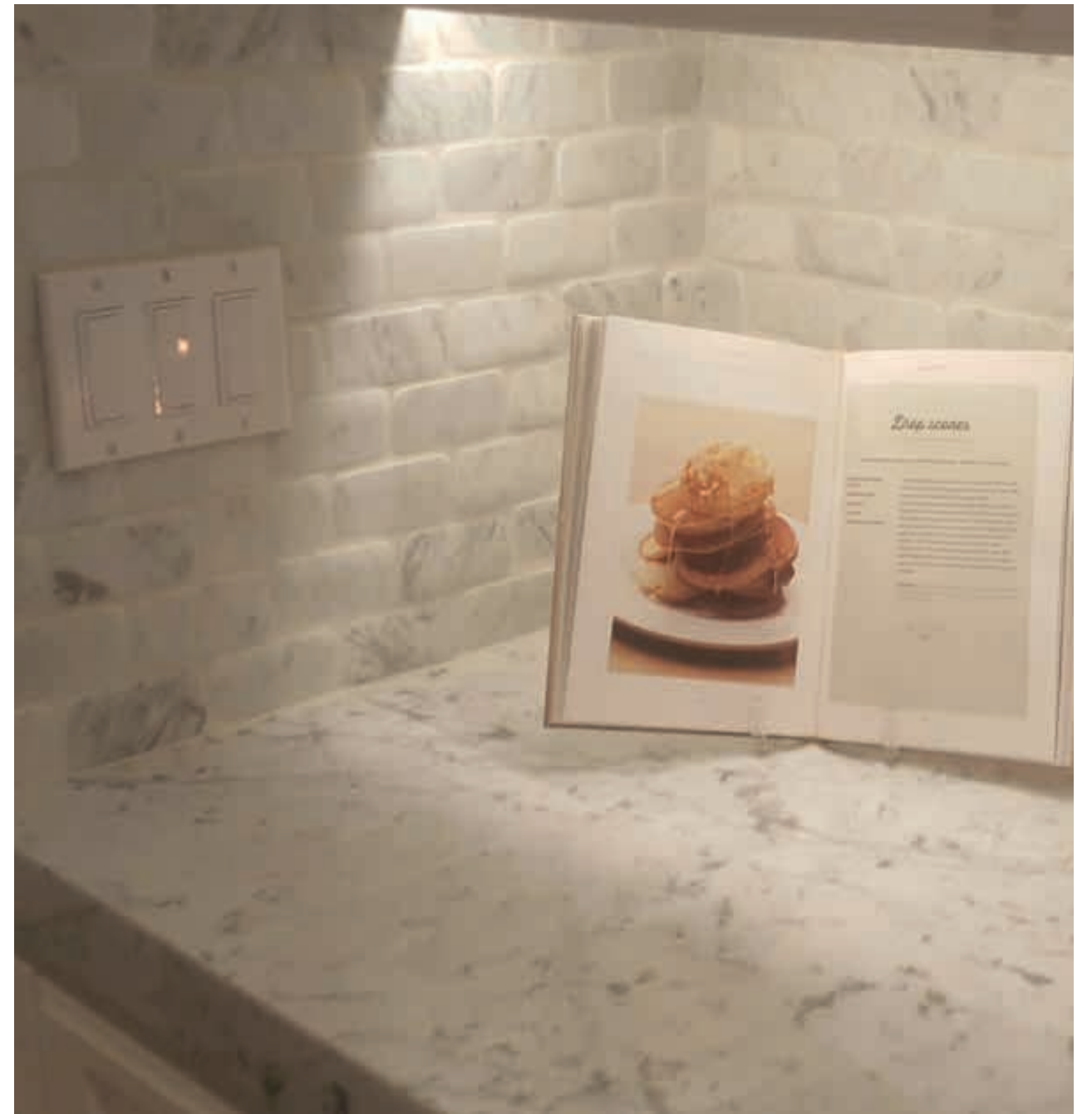
BIANCO ANTICO 2" X 4" / 5 X 10 CM  
 COURTESY OF RASCHEL BETYADGAR CALIFORNIA







BIANCO ANTICO 2" X 4" / 5 X 10 CM  
COURTESY OF MARILYN AENCHBACHER - IDAHO - USA



CARRARA  
2" X 4" / 5 X 10 CM

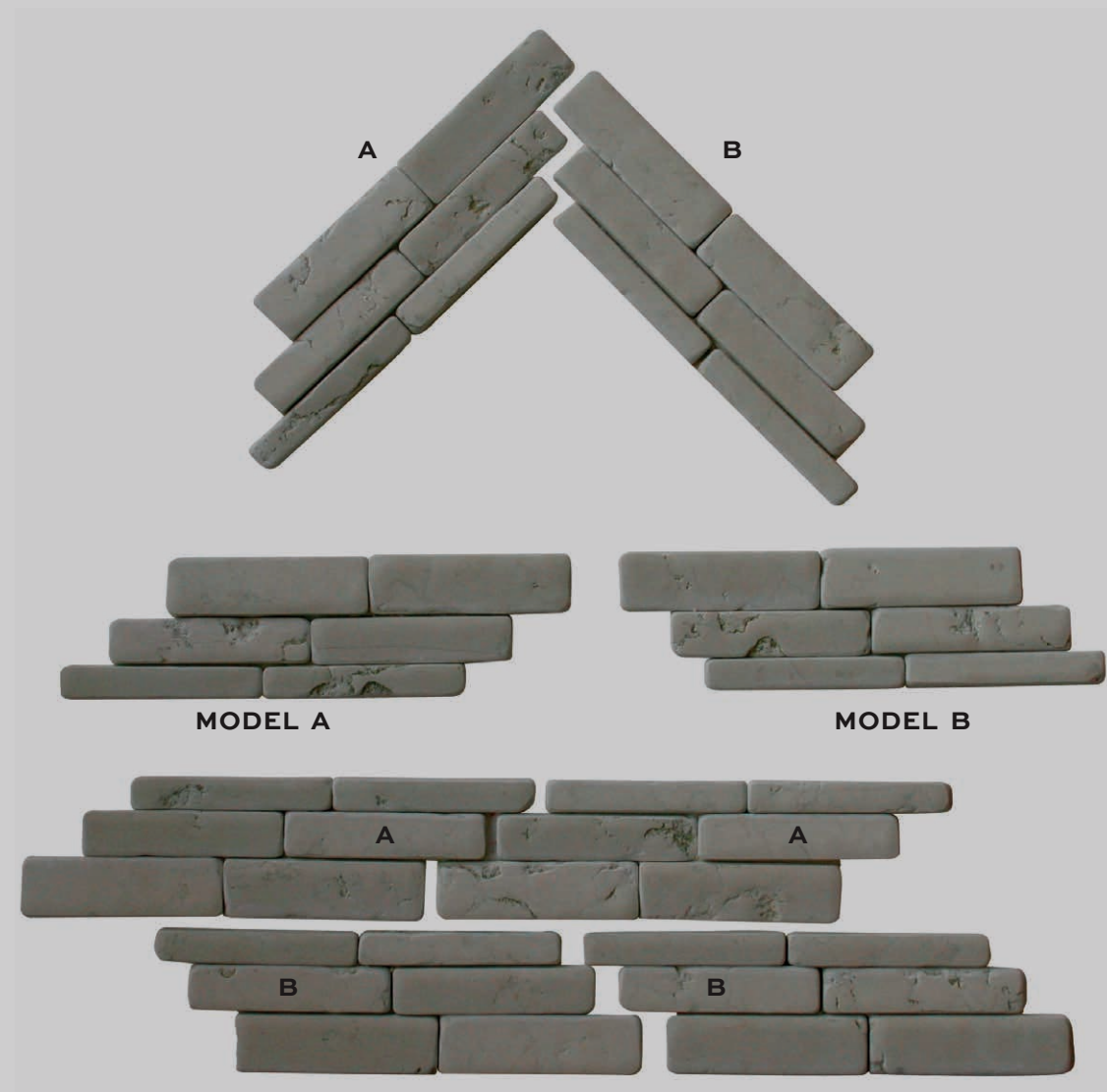




## THE HERRINGBONE

SIZE 1", 1" 1/2 AND 2" x 6" LENGTHS  
ON NET SIZE 0,33 SQ. FT, TOTAL THICKNESS 3/8 - 1/4

2 MODELS CREATE TWO PATTERNS.  
CARRARA AND BIANCO ANTICO ITALIAN MARBLE.



BIANCO ANTICO ITALIAN MARBLE



THE SAME 2 MODELS CREATE TWO PATTERNS.  
**THE HERRINGBONE**



**FREE LENGTHS LOOK**



THE TIMEWORN FLAT VERSION MOSAIC HAVING LESS STRUCTURED TEXTURES THAN BEFORE,  
MUCH MORE HARMONIOUSLY CONSUMPTION HIGH HONED SURFACE FINISHING,  
SUITABLE AND COMFORTABLE FOR FLOOR WITH NEW PATTERNS ALSO,  
GIVING A MUCH MORE SOPHISTICATE AND GENUINE LOOK.



THE FLAT VERSION TIMEWORN MOSAICS





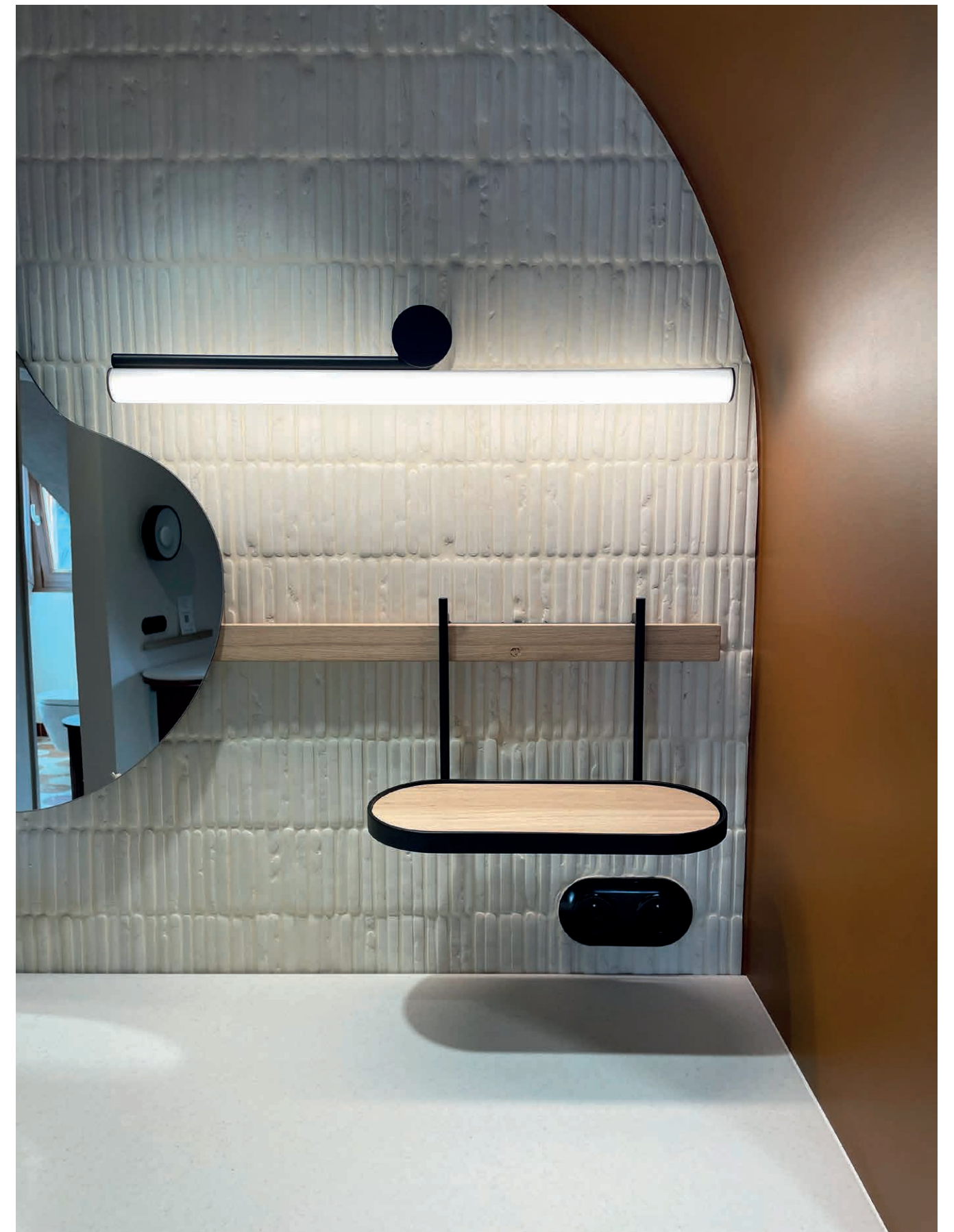
## THE MATCHSTICKS



BIANCO ANTICO ITALIAN MARBLE 1/2 X 4" X 3/8 ON 1,0 SQ. FT. NET. (1,2 X 10 X 1 CM)

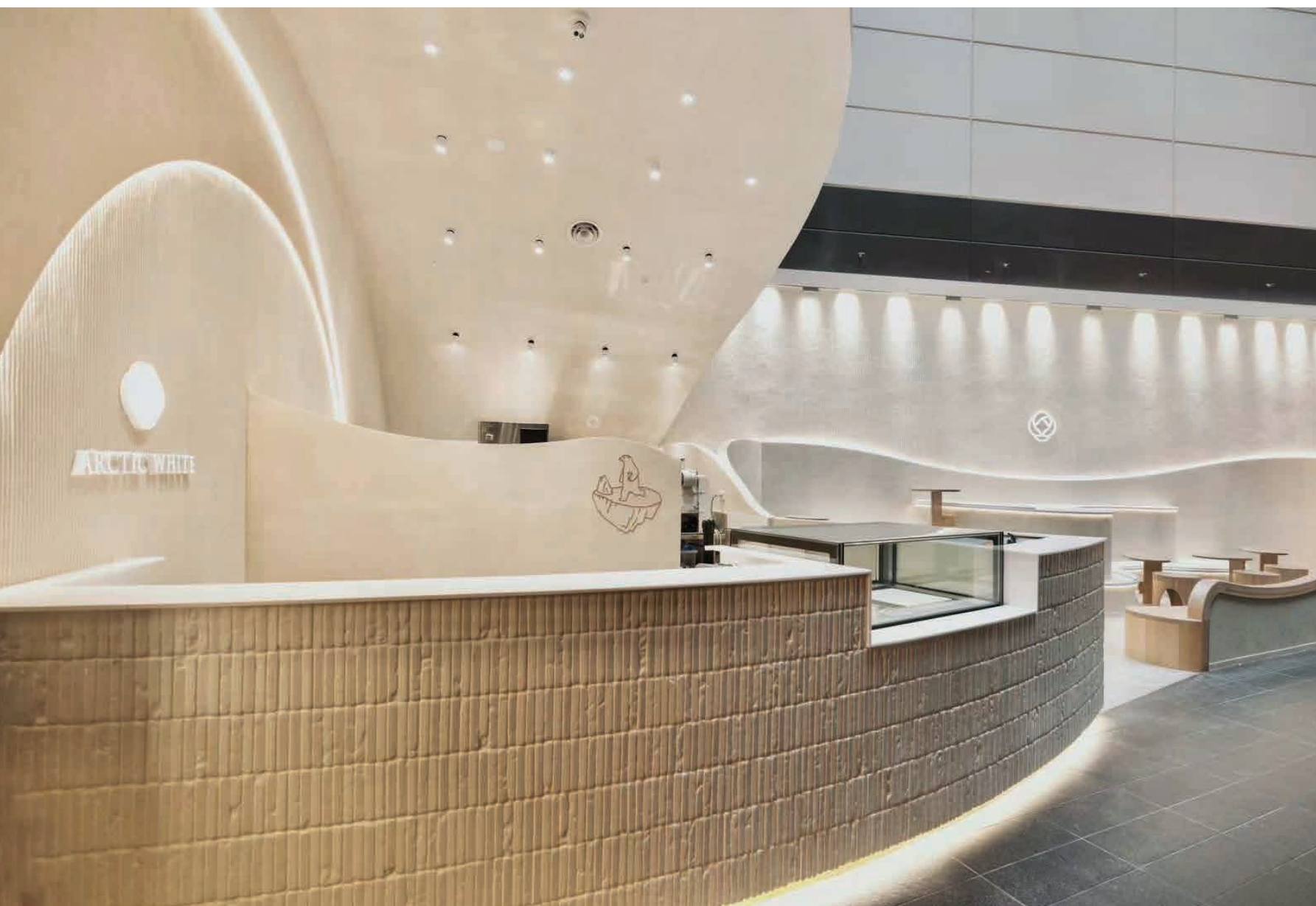






BIANCO ANTICO MARBLE 1/2 X 4" X 3/8 (1,2 X 10 X 1 CM) ON 1,0 SQ. FT. NET.  
HOTEL RESTAURANT FRANKENBOURG, LA VALLETTE, FRANCE  
PROJECT BY @PARISBROOKLYN\_DESIGN  
PHOTO: @EL\_WINTER\_PHOTOGRAPHY





BIANCO ANTICO 1,2 X 10 X 1 CM MESH MOUNTED.

ARCTIC WHITE,  
A CHIC BUBBLE TEA SHOP AT  
THE REGENT PLACE SHOPPING CENTRE,  
SYDNEY, AUSTRALIA.

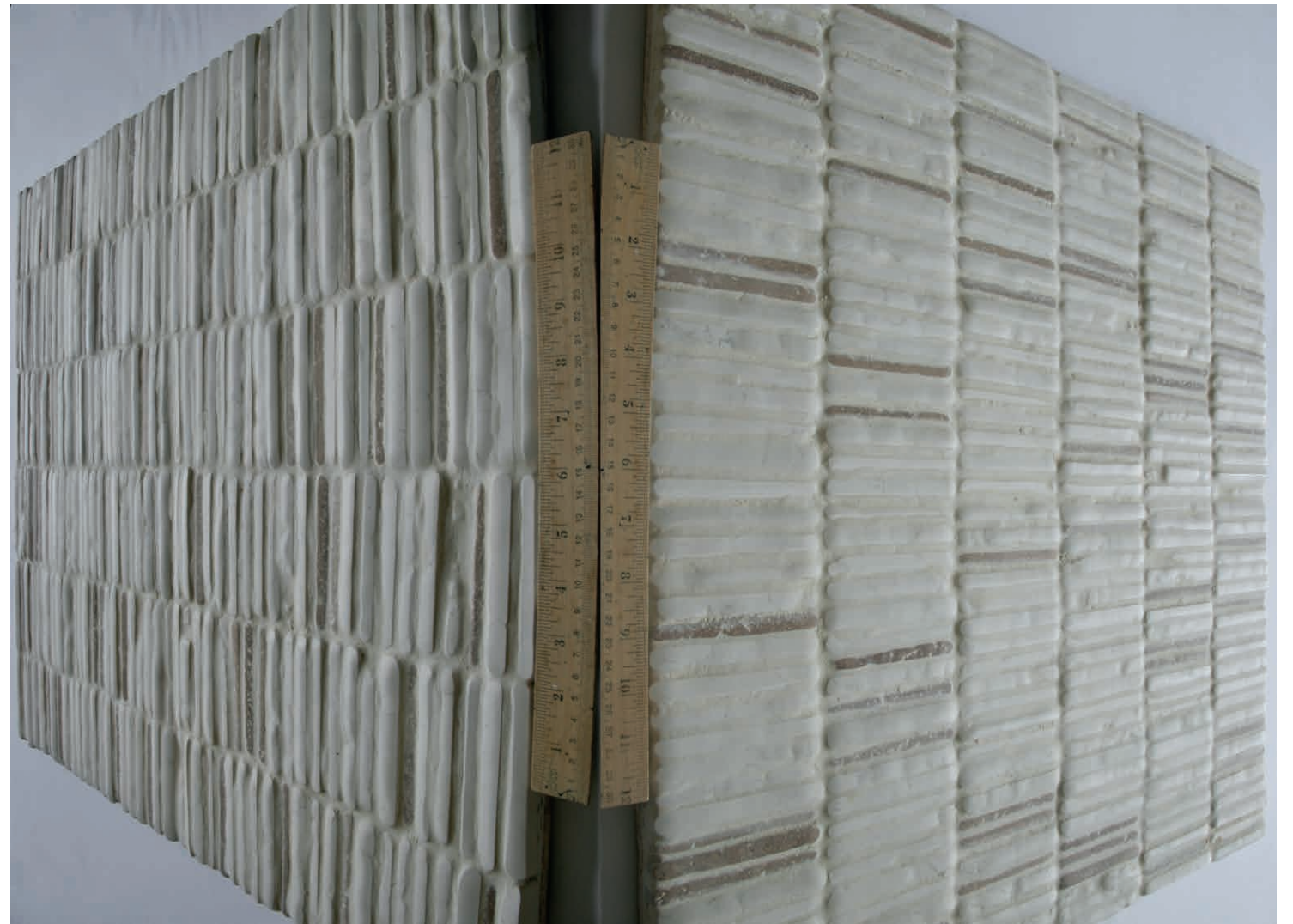
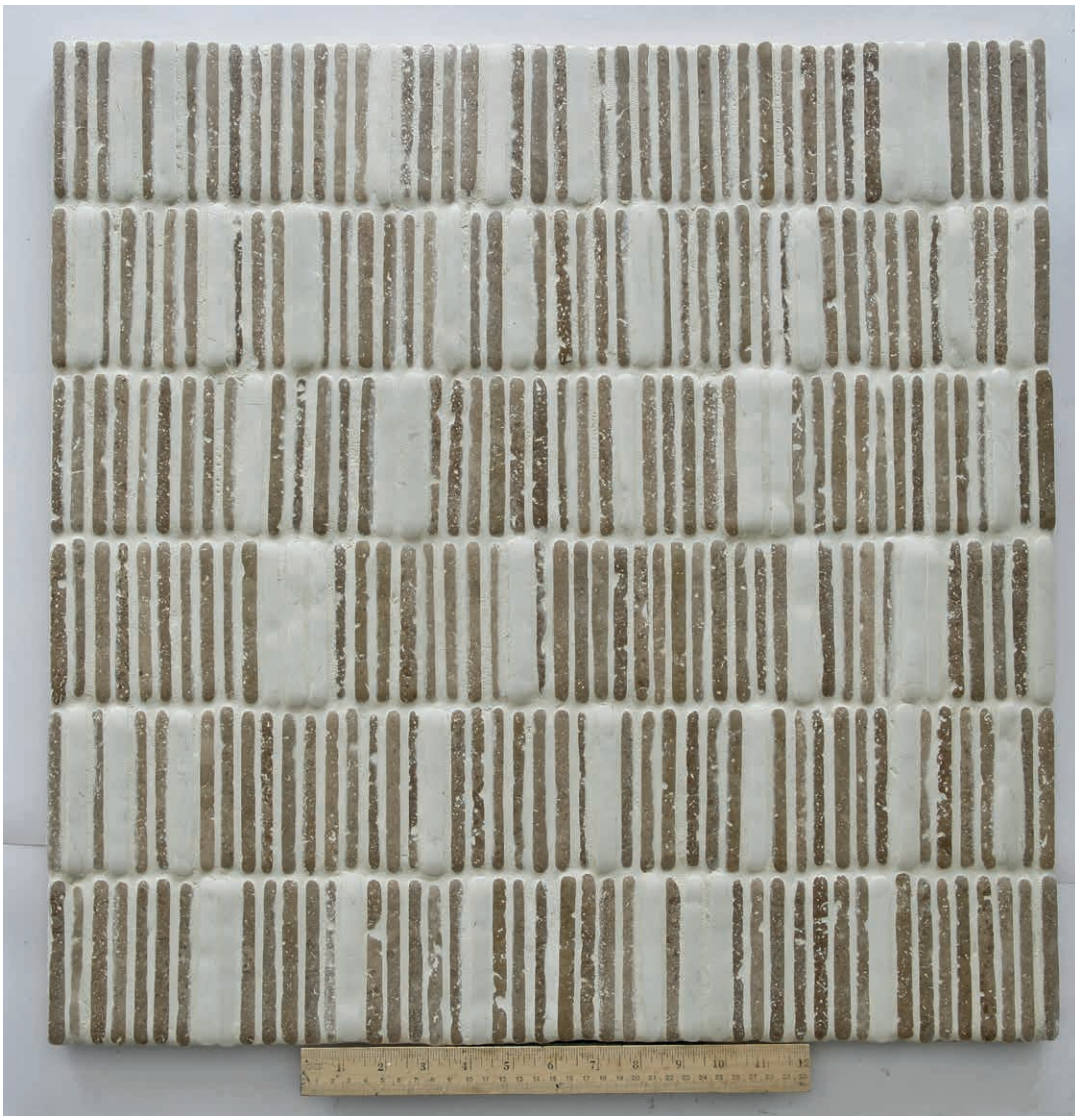
PROJECT: [HTTP://DCONSTRUCTIONOFFICE.COM/](http://dconstructionoffice.com/)







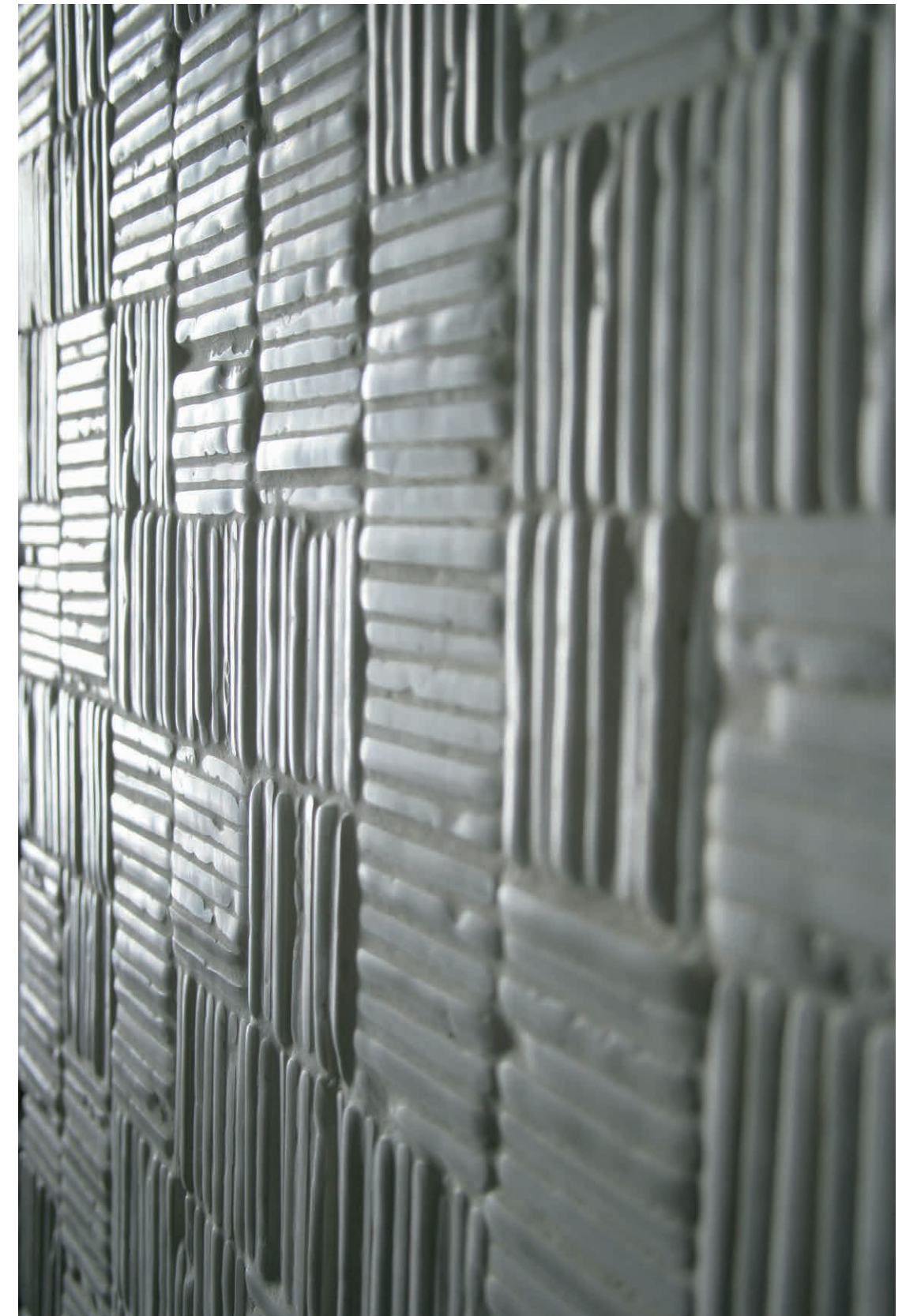
BIANCO ANTICO ITALIAN MARBLE WITH WALNUT ( NOCE ) TRAVERTINE INLAYS  
1/2 X 4" X 3/8 ( 1,2 X 10 X 1 CM ) ON 1,0 SQ. FT. NET  
WALNUT ( NOCE ) TRAVERTINE WITH BIANCO ANTICO ITALIAN MARBLE INLAYS



BIANCO ANTICO ITALIAN MARBLE WITH WALNUT ( NOCE ) TRAVERTINE INLAYS  
SURFACE DETAILS  
WALNUT ( NOCE ) TRAVERTINE WITH BIANCO ANTICO ITALIAN MARBLE INLAYS

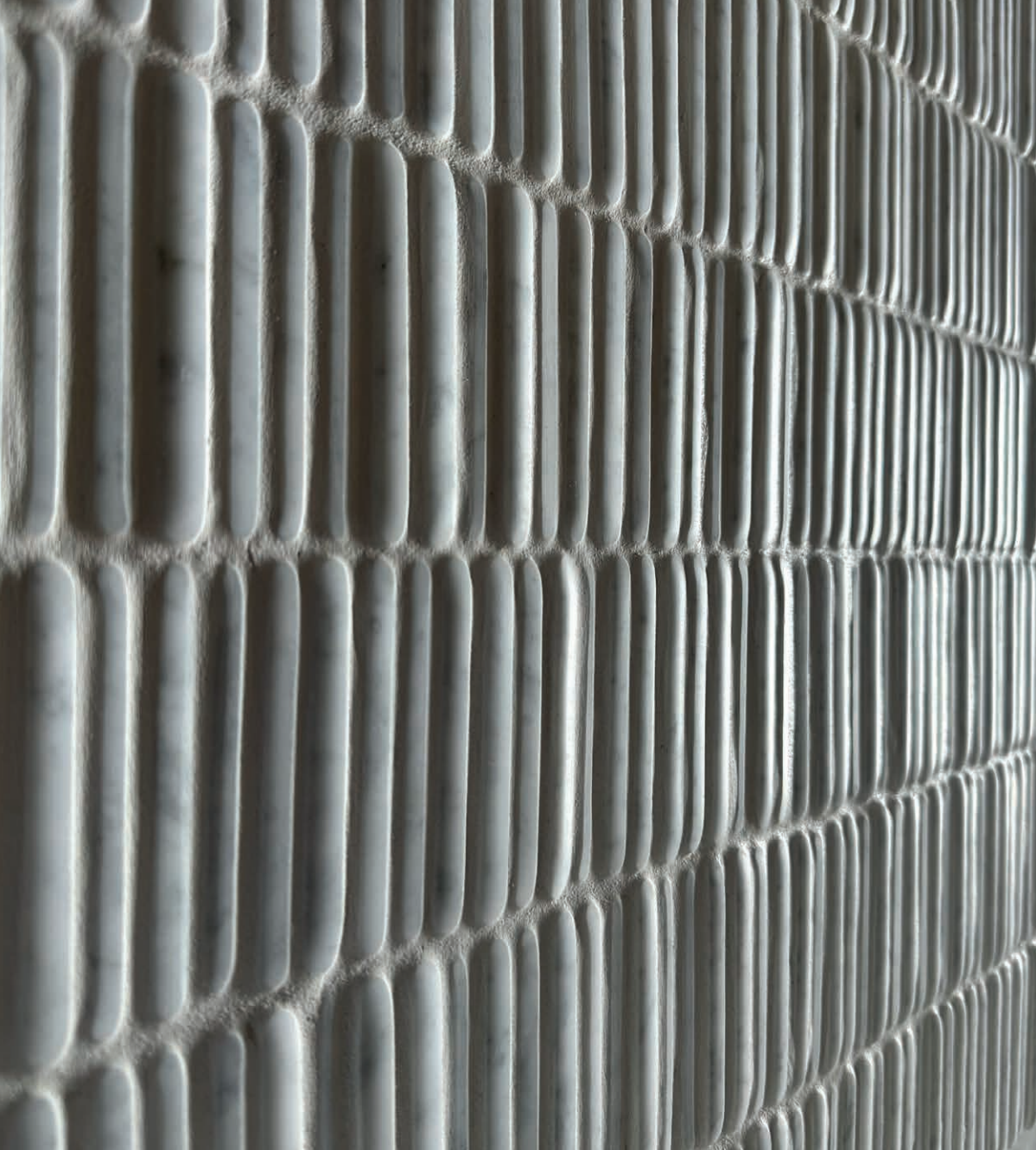




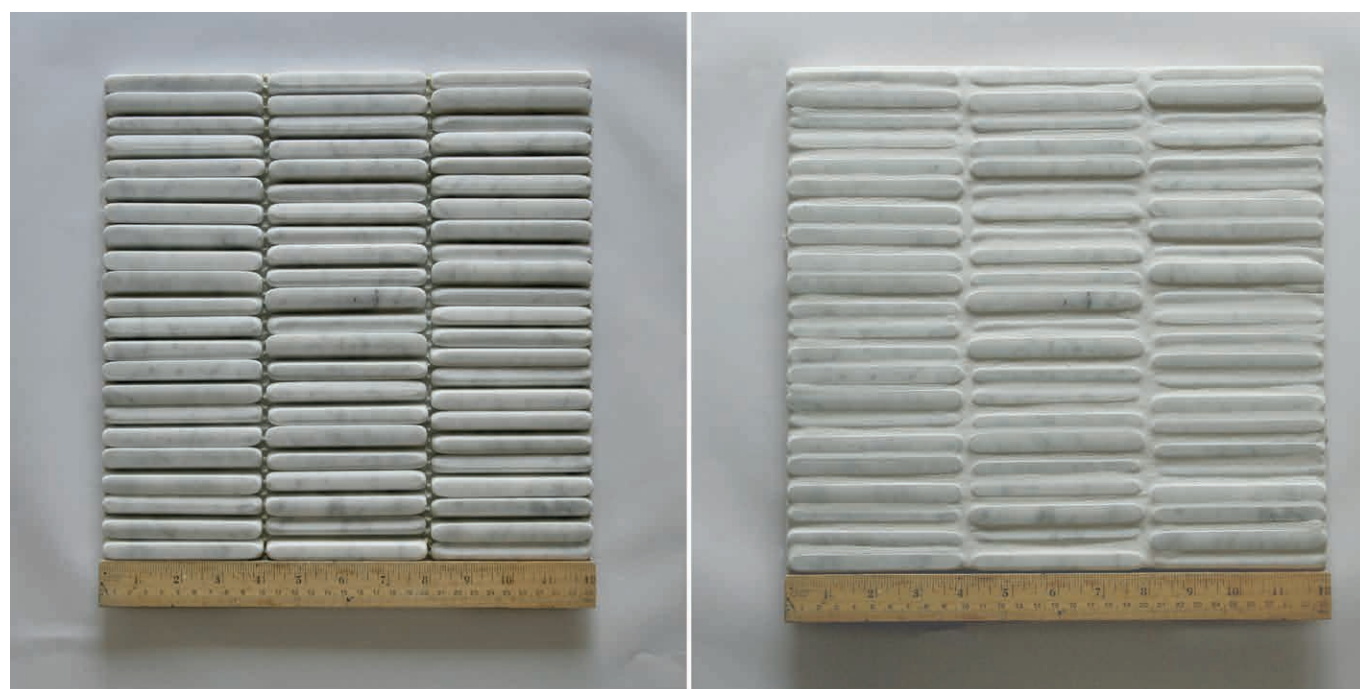


BIANCO ANTICO ITALIAN MARBLE  
JUMBLE 1/2 X 4" X 3/8, ON NET SIZE 16" X 16"





CARRARA MARBLE 1/2 X 4" X 3/8 ON 1,0 SQ. FT. NET. ( 1,2 X 10 X 1 CM ON 30,5 X 30,5 CM NET )







HEXAGON SIDE 1" 3/8 ( 3,5 CM )



BIANCO ANTICO HEXAGON 1" 3/8 ( 3,5 CM ) SIDE ON 0,753 SQ.FT. NET



WALNUT (NOCE) TRAVERTINE  
5/8 X 5" X 3/8 ( 1,6 X 12,5 X 1 CM ) ON 0,82 SQ. FT. NET.



CARRARA MARBLE





CARRARA 3" (7,5 CM) X SHORT FREE LENGHTS, X 3/8 ON 0,97 SQ. FT. NET.



BIANCO ANTICO 3" (7,5 CM) X SHORT FREE LENGHTS, X 3/8 ON 0,97 SQ. FT. NET.





pattern #5 :  
2" (5 cm)  
randomly mixed  
Carrara

# PATTERN #5 AND #6

JERUSALEM GOLD



pattern #5 : randomly mixed 2" (5 cm)

JERUSALEM GOLD



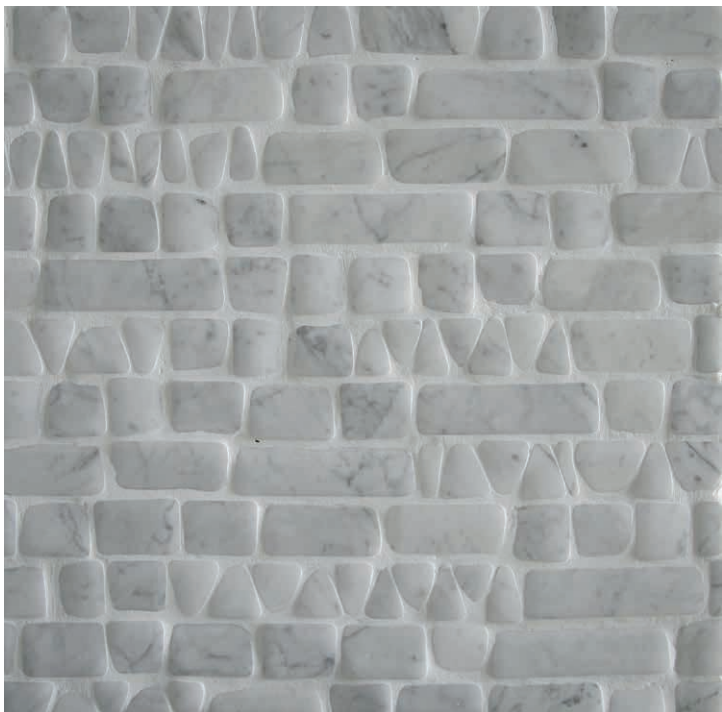
pattern #6 : single model each 2" line (5 cm)

BIANCO ANTICO



pattern #5 : randomly mixed 2" (5 cm)

CARRARA



pattern #5 : randomly mixed 2" (5 cm)





CARRARA



## PATTERN #9

SINGLE INTERLOCKING MOSAIC SHEET MODEL THAT CAN BE INSTALLED RANDOMLY ON ALL 4 SIDES.



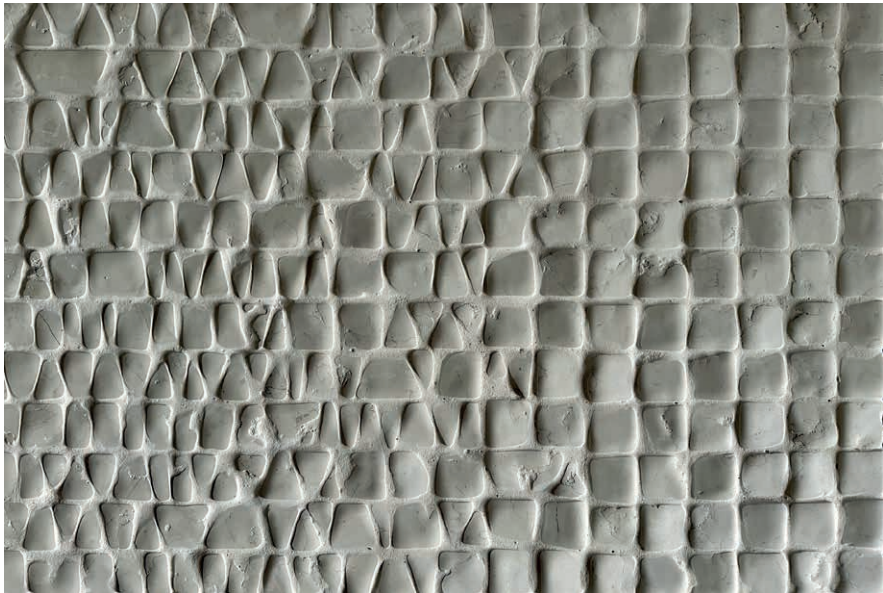
BIANCO ANTICO



2” ( 5 CM ) X HAND-CUT



BIANCO ANTICO ITALIAN MARBLE  
2” X HAND-CUT X 3/8  
ON 0,93 SQ. FT. NET.



SPECIAL MOSAIC SHEET  
THAT ALLOWS SHADING FROM  
2” X 2” TO 2” X HAND-CUT.



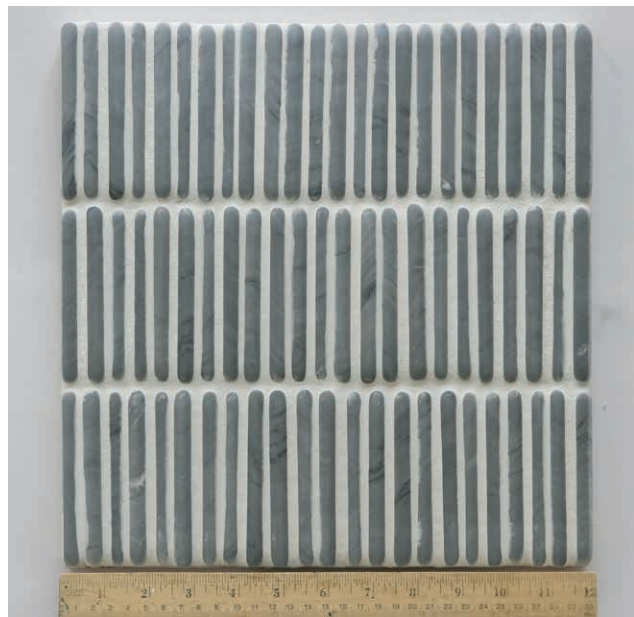




NOCE TRAVERTINE



DUSK TRAVERTINE



BARDIGLIO IMPERIALE



JERUSALEM GOLD



BLACK MARBLE



CALACATTA

## COLOURS

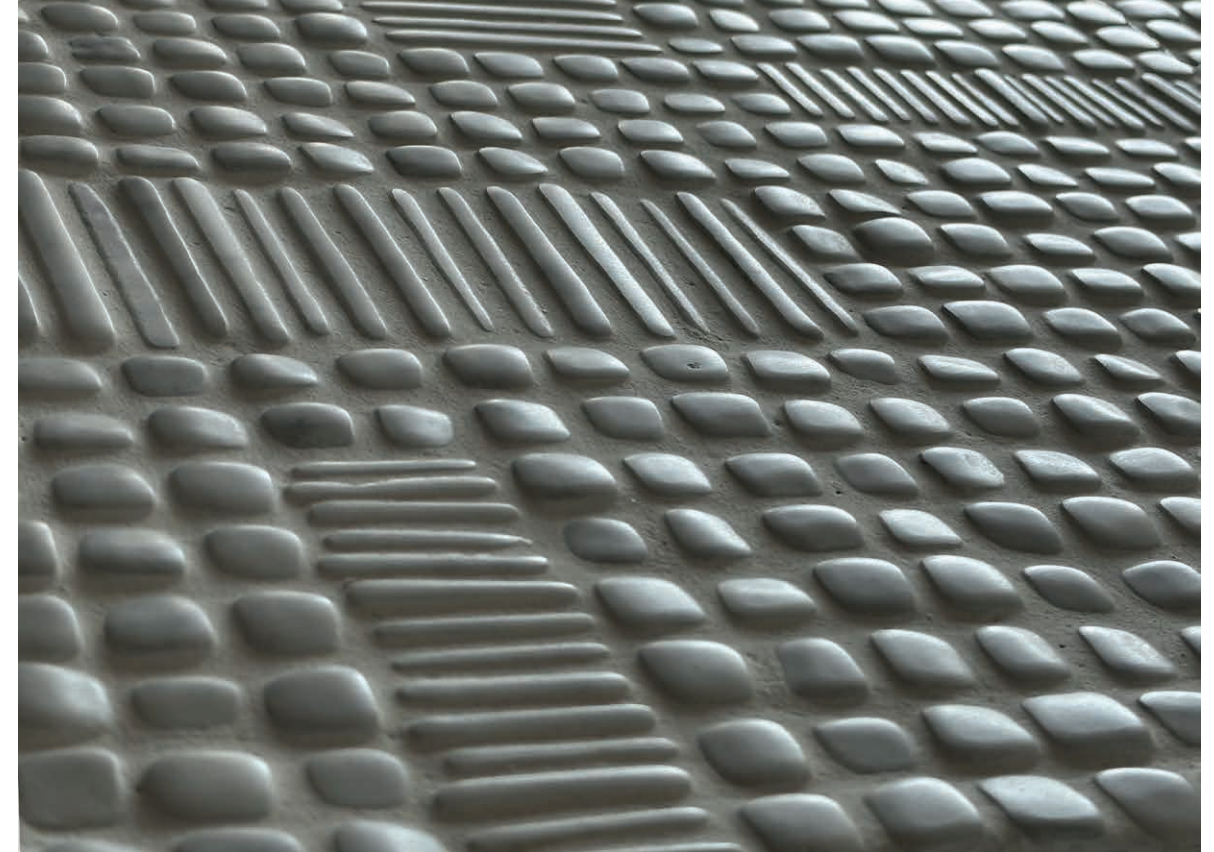
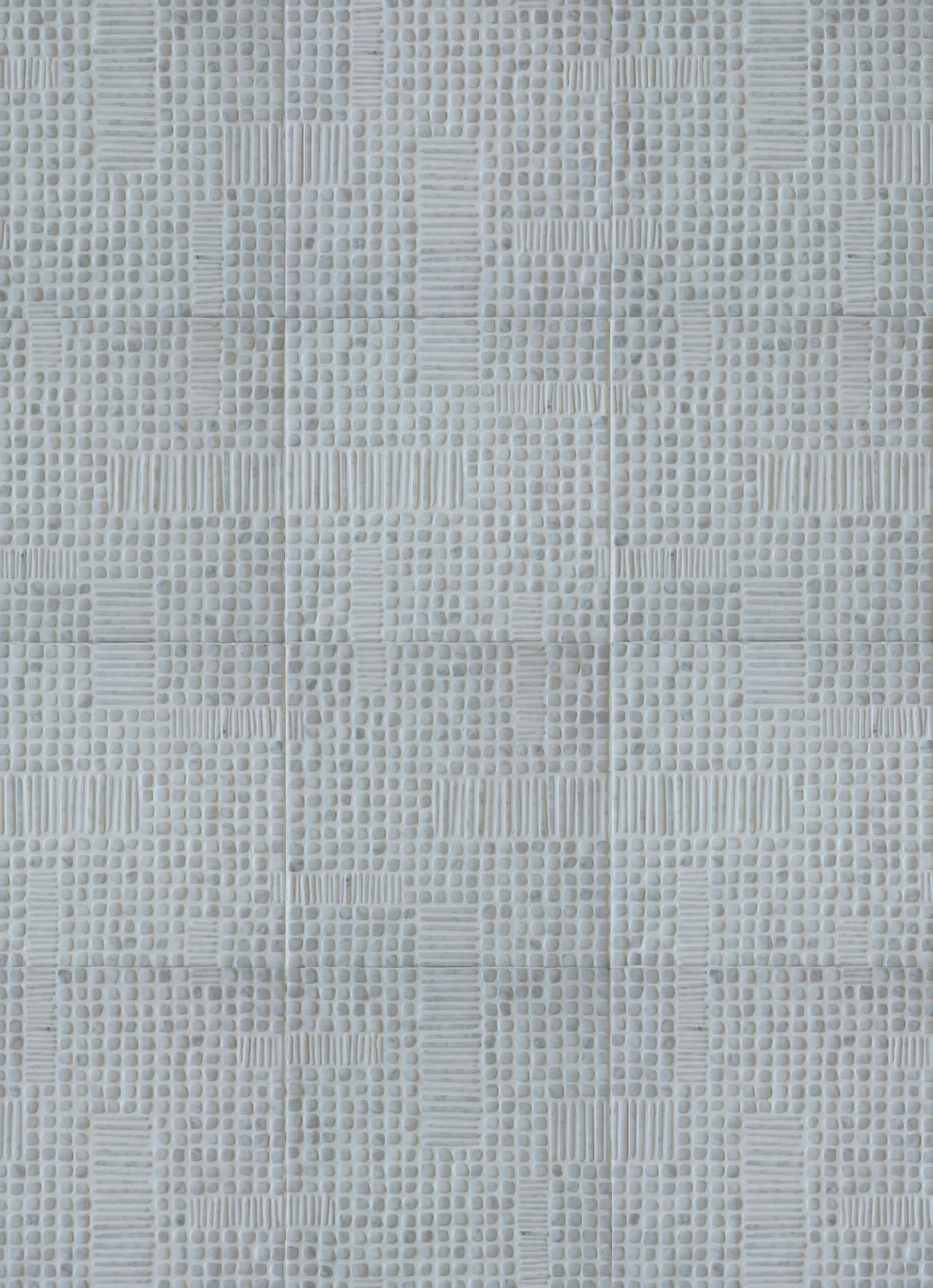


BIANCO ANTICO



CARRARA  
GIOVANNI BARBIERI

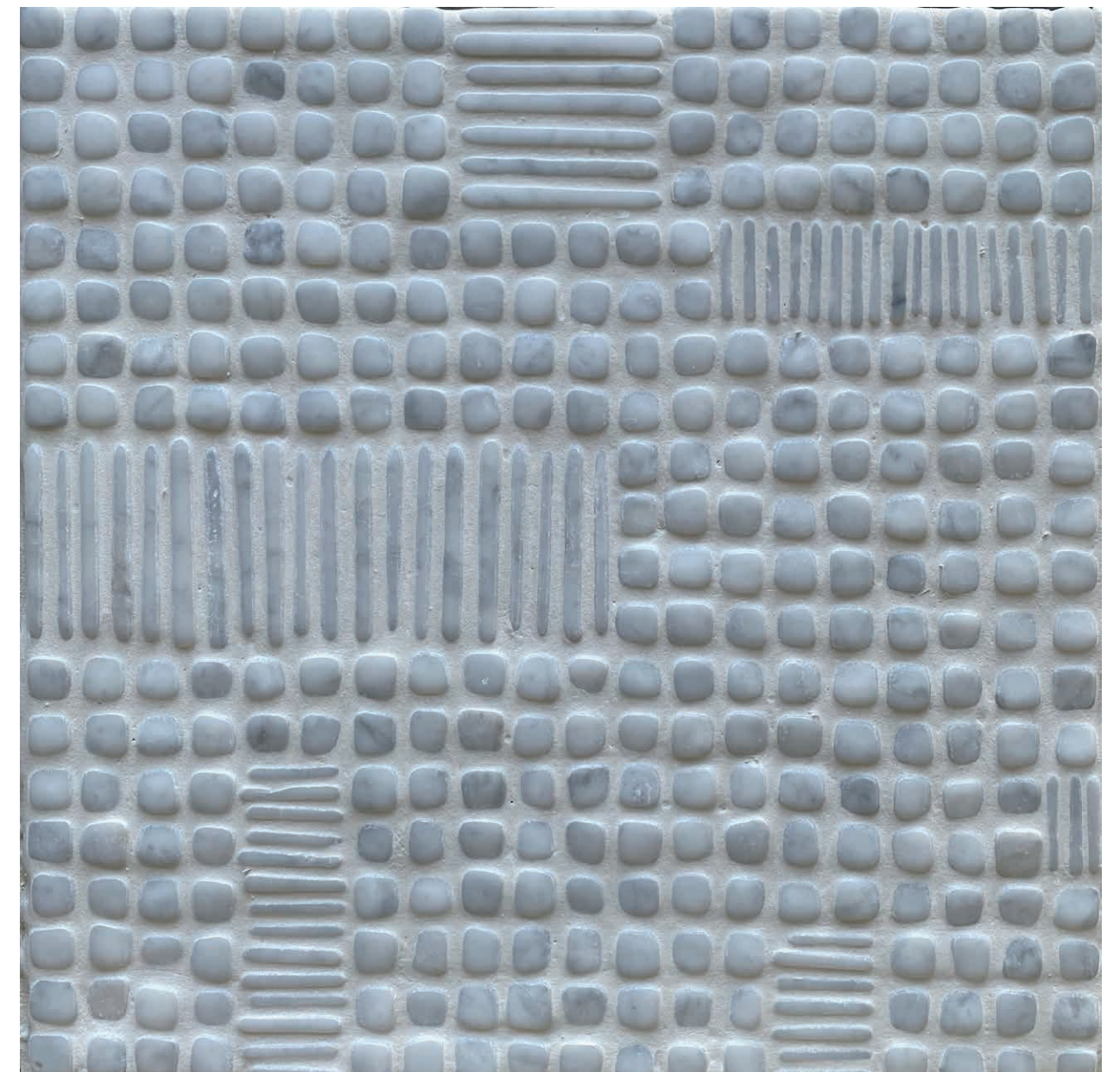




PATTERN #33 AVAILABLE IN CARRARA MARBLE, ONLY.

MADE WITH A SINGLE MODEL

ON NET 16" X 16" X 3/8 ( 40,6 X 40,6 X 1 CM )

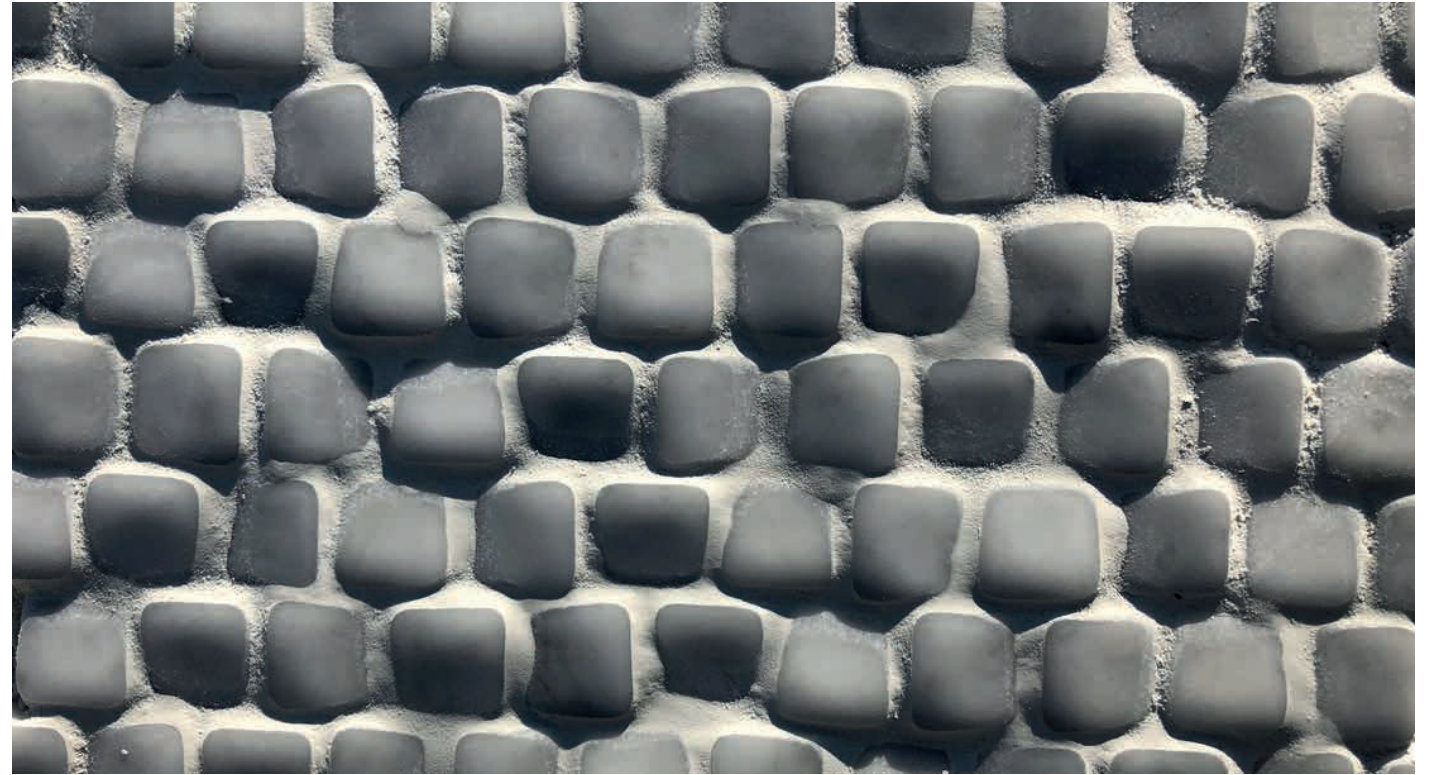




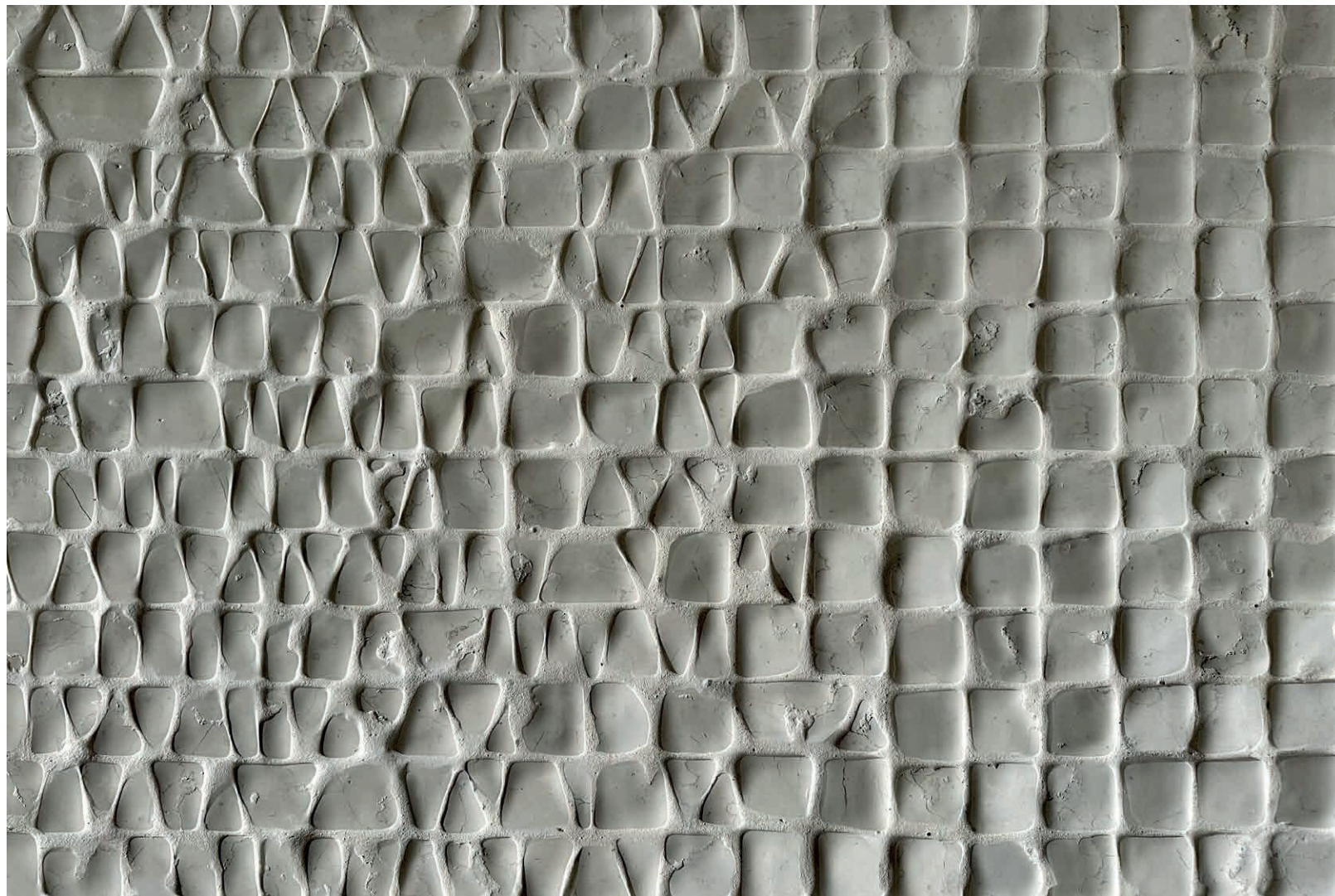


1" (2,5 CM) X FREE LENGHTS X 3/8 ON 0,93 SQ. FT. NET.

## CUSTOM MADE



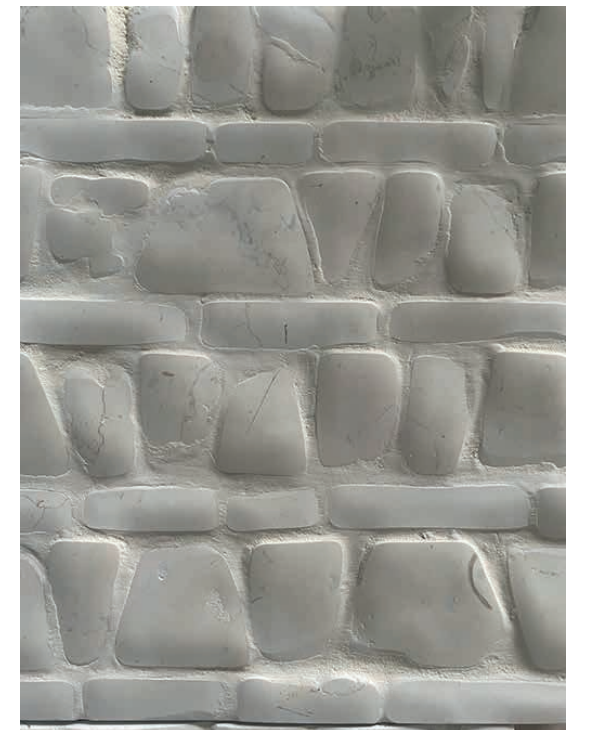
1" X 1" X 3/8 (2,5 X 2,5 X 1) STAGGERED ON 0,93 SQ. FT. NET.



SPECIAL MOSAIC SHEET THAT ALLOWS SHADING FROM 2" X 2" TO 2" X HAND CUT.



CARRARA MARBLE 1/2 X 3" X 3/8 ON 1,72 SQ. FT. NET  
1,2 X 7,5 X 1 CM ON 40,6 X 40,6 X 1 CM NET



PATTERN #13 BIANCO ANTICO  
2" X HAND CUT + 3/4 X FREE LENGHTS



1,5" X 1,5" X 3/8  
(3,7 X 3,7 X 1 CM )

3" X FREE LENGHTS  
+  
2" X HANDCUT  
PATTERN #25







## CUSTOM MADE



SHADING FROM DARK GREY TO WHITE USING 9 DIFFERENT KIND OF ITALIAN MARBLE.  
 SIZE 3/4 X 1" TO 1" 3/4 ( 2 X 2,5 TO 4,5 CM )  
 COURTESY OF MR. PENER, BRECKENRIDGE, COLORADO.



# THE MOSAICO

INTRODUCING A 2024 REVOLUTIONARY SURFACE FINISHING MODEL THAT REDEFINES  
ELEGANCE AND SUSTAINABILITY IN NATURAL STONE MOSAIC.

DEVELOPED AS AN EVOLUTION OF GIOVANNI BARBIERI'S PIONEERING  
INVENTION IN 2011 TO PRODUCE THE TIMEWORN MOSAIC,

THIS INNOVATIVE TECHNOLOGY ACHIEVES A DISTINCTIVE AESTHETIC

BY DELICATELY WEARING AWAY THE SURFACE

OF EXTREMELY SMALL (1/2 INCH) TESSERAE,

RESULTING IN A SEMI-MATTE NATURAL WAVY SURFACE.

THIS PROCESS NOT ONLY ENHANCES THE BEAUTY OF MARBLE,

BUT ALSO HONORS ITS HISTORICAL ESSENCE,

NOT ONLY AESTHETICALLY BUT MOST IMPORTANTLY TO THE TOUCH.

BY SELECTIVELY WEARING AWAY THE SOFTER ELEMENTS

OF THE MARBLE'S COMPOSITION,

IT FACILITATES SUBSEQUENT POLISHING TO PERFECTLY MATCH

THE QUALITY OF THE ORIGINAL HISTORICAL FLOORS.

WHAT TRULY SETS THIS TECHNIQUE APART IS ITS UNWAVERING COMMITMENT

TO SUSTAINABILITY, WITH THE ENTIRE PROCEDURE CARRIED OUT

USING ONLY ECO-FRIENDLY ABRASIVES.

FOR EXCEPTIONAL CARE, MAINTENANCE AND AESTHETICS

IN THE DISTRESSED NATURAL STONE TILE MARKET,

THIS SURFACE EMERGES AS AN EXCEPTIONAL CHOICE,

OFFERING BOTH EASE OF USE AND A VISUALLY APPEALING FINISH.

EXPLORE THE FUSION OF ART AND SUSTAINABILITY

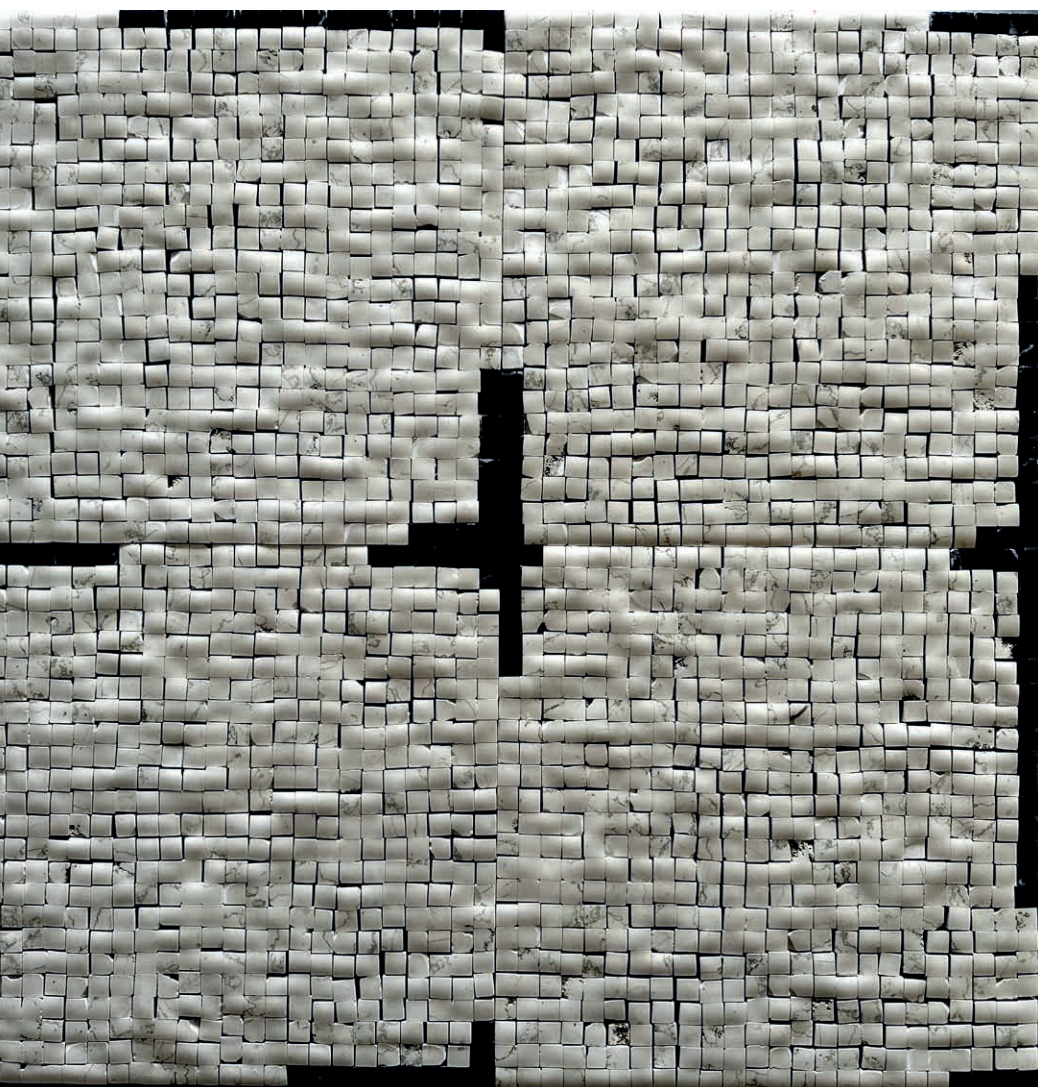
WITH THIS EXCEPTIONAL NATURAL STONE SURFACE.



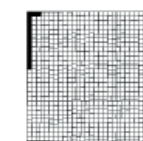
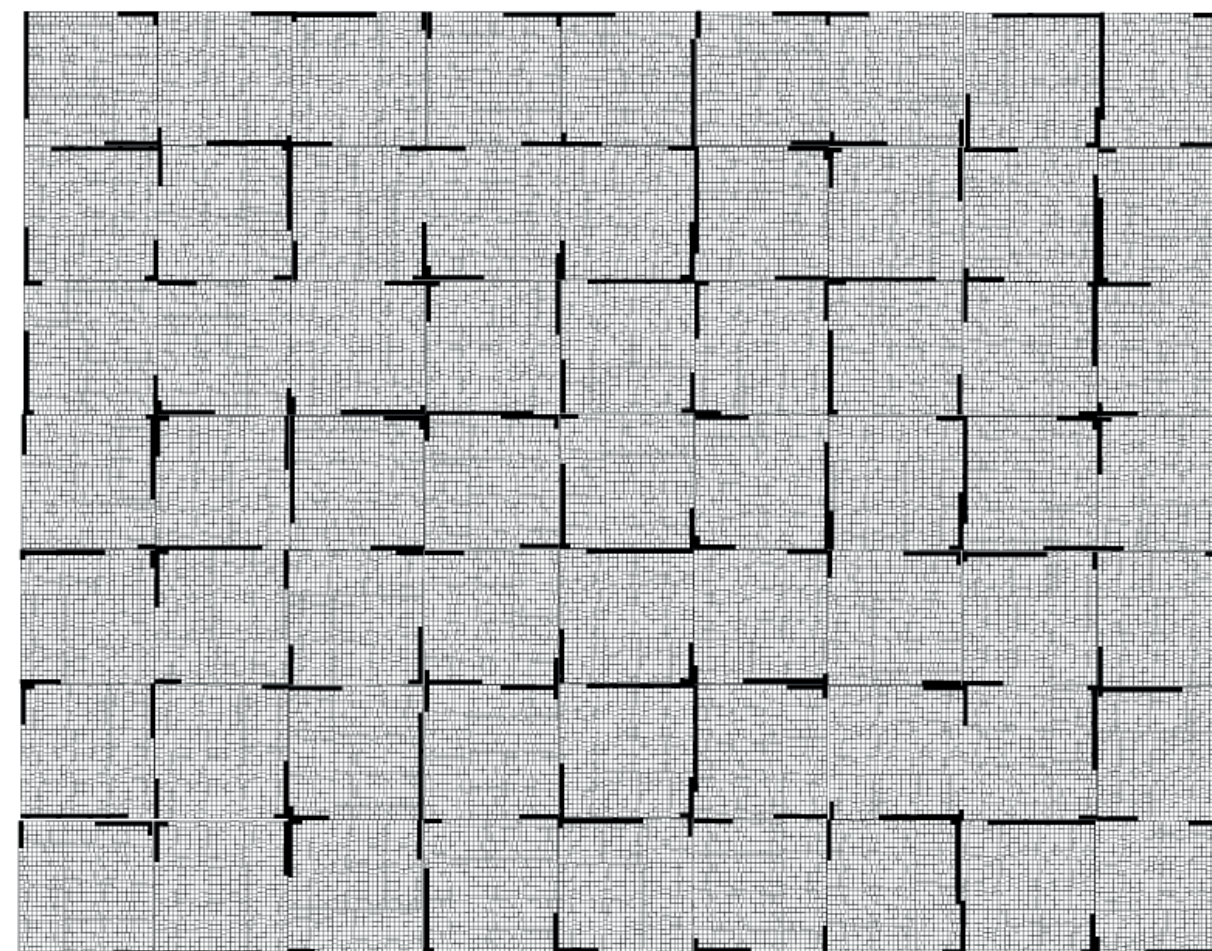


1/2 x 1/2 x 3/8 ( 1,2 x 1,2 x 1 cm ) natural stone chips  
on mosaic sheets 6" x 12" ( 15 x 30,5 cm )  
on any custom made design/dimensions.



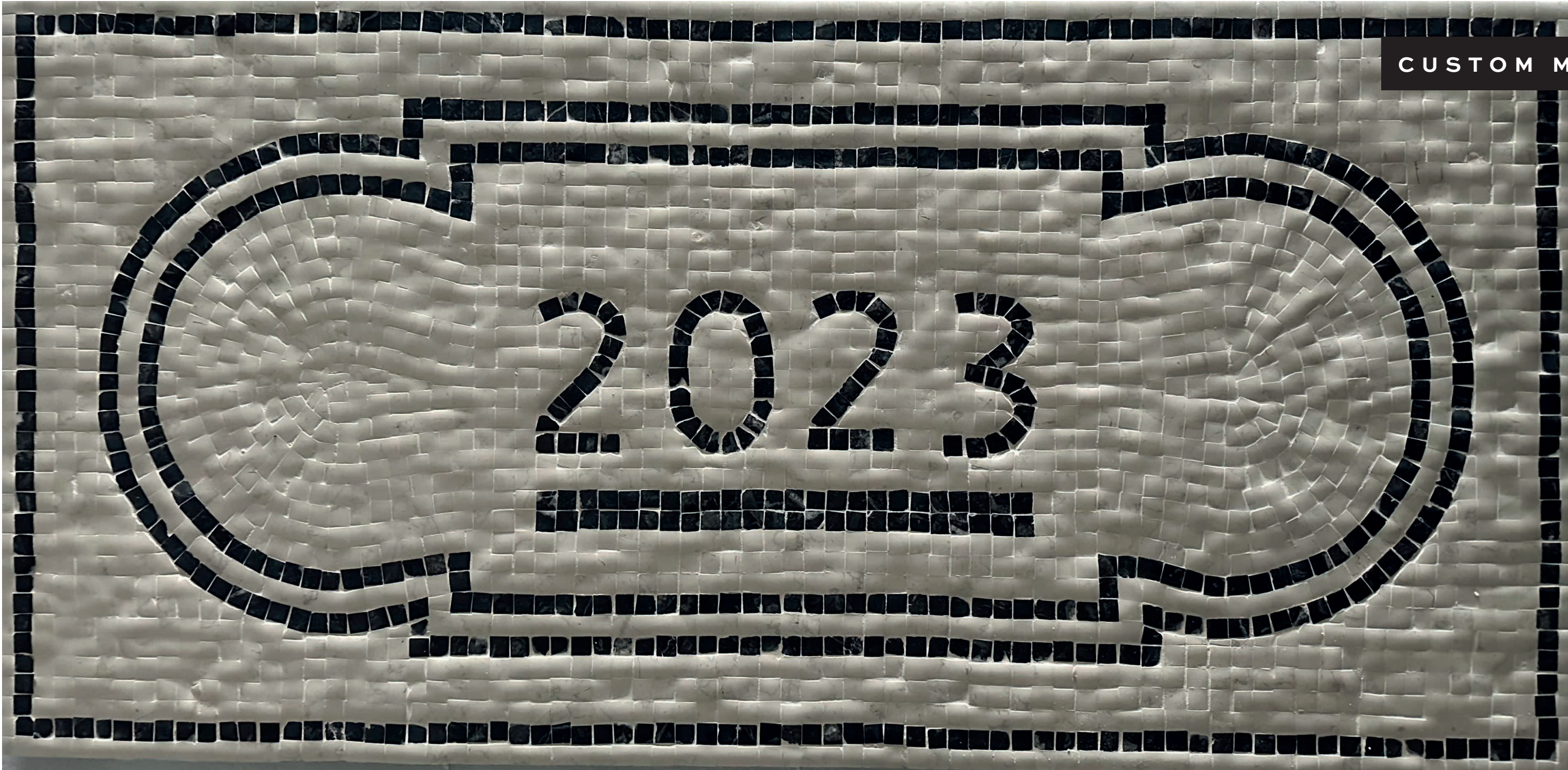


BIANCO ANTICO + NERO MARQUINIA  
TILES SIZE 12" x 12" (30,5 x 30,5 Cm) ON NET  
TOTAL 3/8 (1,0 Cm) THICKNESS



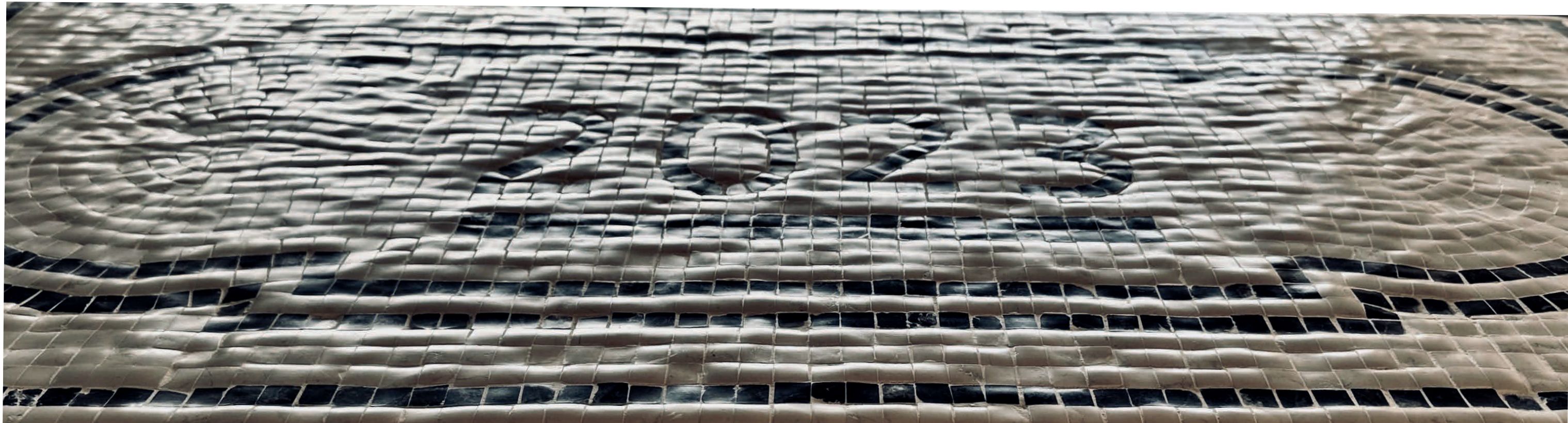
Abstract 1





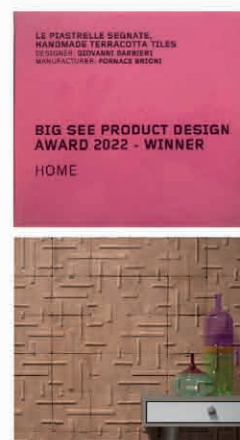
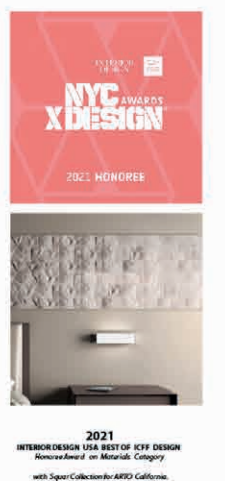
BIANCO ANTICO + NERO MARQUINIA PANEL SIZE 18"x38" (45,7 x 96,5 Cm)

ON ALLUMINIUM HONEYCOMB TOTAL 1" (2,5Cm) THICKNESS





# AWARDS





# BIOGRAPHY

Giovanni started his career at the age of 14, working in the marble sector as a go-getter.

By the time he was 16, he was capable of completing floorings by himself for his older brother’s business.

In 1984, at the age of 18, Giovanni contributed 50% of the investment and entered into a business partnership with his brother by establishing F.LLI Barbieri.

By then, the company had already started producing tumbled marbles for its own projects.

At the age of 22, Giovanni started attending school courses in interior design from 1989 to 1997.

His best results were achieved on building site projects – projects where he worked together with the architects who taught the classes.

These collaborations reinforced a period of strong progression: Giovanni was the only project developer and supplier of marble tiles that came exclusively from the Family Stone company and personally supervised the installations.

The emphasis was placed on the production process and the design of new products; first for the local market, then all the way to the United States, thanks to the excellent understanding of design, research and development and the excellent longstanding collaboration with Nancy Epstein.

Many patents were developed in the late 90’s such as “MARMO ANTICO LUCIDO”; “FRAMENTI BORDER”; “TIMEWORN MARBLE” and more were to follow.

Giovanni participated in various Contemporary Art Competitions receiving a special mention in Torino in 2003 with Roberto Lano, a renowned European Metal Artist-Sculptor.

In 2008, “AMBRA COLLECTION” received an American Architecture award and was featured at “Triennale Design Museum” in Milan for more than a year.

In 2010, Giovanni started his successful collaboration with Sara Baldwin developing irreproducible Timeworn Mosaics a best seller after 13 years, as well as Ambra.

Giovanni Barbieri has been a source of inspiration for many renowned brands resulting in the successful reproduction of his inventions and Techniques; AMBRA is an example reproduced by many.

In 2013, the first Engineered 3D Marble Tiles Collections Exciton/Hive was awarded at Best-Of-Year INTERIOR DESIGN.

This Collection is produced by recycling marble dust from production waste for high performance installation where natural stone is not preferred.

In 2013, the Memento Porcelain Tile Collection was Best-of-Year INTERIOR DESIGN Award-winner with Valledunga Ceramica.

In 2014, Giovanni was the Winner of the London Surface Design Award with “CLAS” on Belgian project.

2015 is the year of the Murano Collection; Award Winner at Best-Of-Year INTERIOR DESIGN, NYC.

In 2016, the world’s first true 3D porcelain tile collection “TRILOGY”, winner of BoY INTERIOR DESIGN, was presented in the USA and at New York City Design Award in May 2017 at the MoMa in NYC.

2017 marks the launch of new shading flat 3D wall tiles: “Collection RR”.

In 2018, a new chapter begins with new Antiqued handmade Black terracotta tiles in an “easy-care” version: the “Minimal Rustic Collection”.

2018-19-20 was the initial success of the first version of SQUAR[E] Collection, between the tile collection and Art performance, it won triple awards in the USA also at the BoY Awards, and by ARCHITECTURAL RECORD USA Magazine also with the handmade ceramic tile collection “KLE”.

2020 is over and the Terrazzo Collection “The Fine Lines” was nominated Overall Winner at SBID (The Society of British International Interior Design) product design Awards in London.

INTERIOR DESIGN USA: Best of Year Awards nominated Giovanni one of the four best Product Designers.

The Fine Lines Terrazzo Collection won a Boutique Design New York International Design Competition in the Floor Covering Category.

On 2021 March, Squar[e] ceramic tile size 2” x 2” 3/4 received the Red Dot Product Design 2021 Award.

The Fine Lines Terrazzo is Award winner at last 17th Hospitality Awards in NYC at Cipriani NYC Event last September 21st, thanks a marvellous cooperation with the excellence in Terrazzo handmade 3rd generation family of Laboratorio Morsetto in Vicenza.

Depthile Carrara Marble tiles has been installed on INTERIOR DESIGN Best Of Year Award Winner project/Bath by Snorre Stennessen in Norway.

On 2022, “Le Piastrelle Segnate” designed for Fornace Brioni, become the Red Dot Design Best of the Best Award winner, probably the most important European product design award, established in 1955.

2023 started beautifully with the receipt of the third Red Dot Product Design Award, Best of the Best with Blooming wood parquet system collection.

2023 “Le Piastrelle Segnate ” has been the winner/nominated 2023 best tile design by Luxe Magazine in USA. Thanks to Cle’ Tile , Nord America distributor.

Since end of 2023 Giovanni Barbieri has not participated in any international award and since then he has dedicated himself to creating a process to produce never repetitive designs using a standard production that is the subject of 2 recently filed American patents.

“Because, at the end, what has to shine the most, after all, are not the prizes I get, but always the light in the Customer’s eyes.”

Giovanni Barbieri.





WWW.GIOVANNIBARBIERI.COM  
INFO@GIOVANNIBARBIERI.COM  
SCHIAVON - VICENZA - ITALY



IT IS FORBIDDEN TO REPRODUCE ANY PART OF THIS CATALOGUE

© COPYRIGHT BY GIOVANNI BARBIERI / BDSR: ALL RIGHTS RESERVED